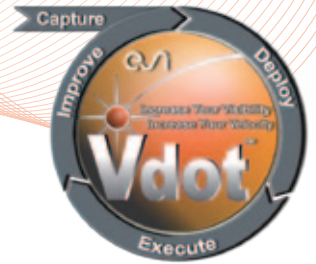




VDOT™ AND/OR PURE PROJECT MANAGEMENT SOFTWARE?

PROJECT MANAGEMENT & WORKFLOW FOR EFFICIENT EXECUTION AND AUTOMATIC STATUS TRACKING



PROJECT MANAGEMENT SOFTWARE

- Simple, tabular task definition.
- Simple task dependencies (predecessor, successor).
- Automatic schedule and resource calculations.
- But...
- Limited help for task execution. (no connection to the data or tools).
- Significant effort for status tracking.

VDOT™

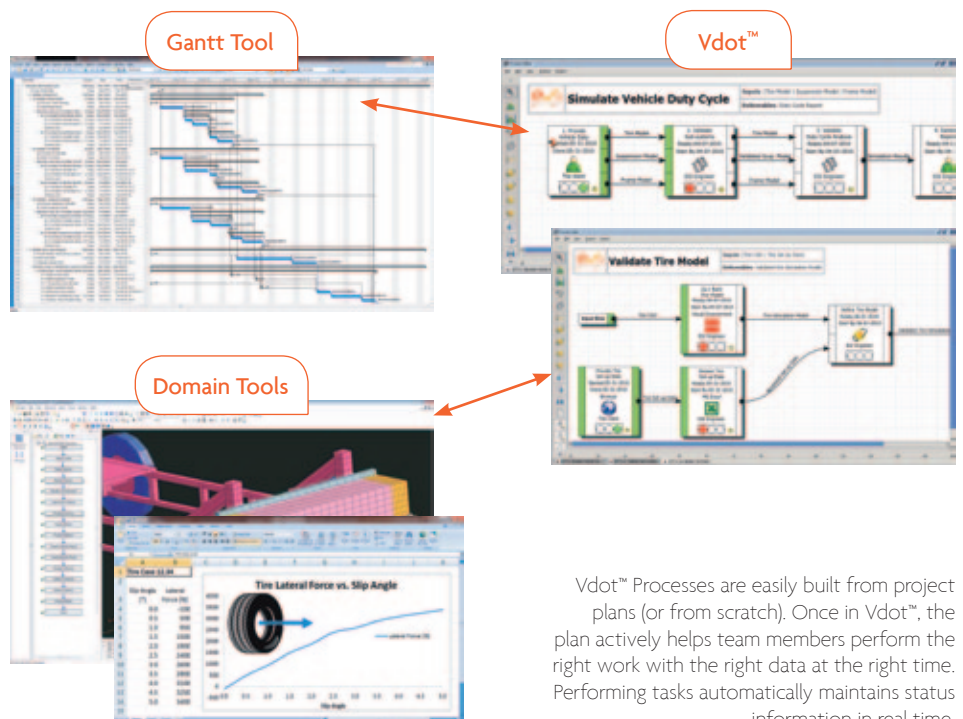
- **Richer process model** (flowchart UI for information flows and tool definitions & standard project management parameters).
- **Information flows** define task dependencies.
- **Team execution** with prioritized delivery of task data and tools.
- **Status updates in real-time** from performing tasks.
- **Interfaces** to Project Management software.

Ensure that teams efficiently and verifiably follow project plans with Vdot™. Enjoy real time project status visibility without extra effort for information gathering.

Gantt chart project management software provides a simple way to plan and track project schedules and resource requirements with a familiar interface. If the task dependencies are well understood, then a feasible plan can be generated. If enough effort is devoted to tracking the status of the work, then management can enjoy needed visibility as the project progresses.

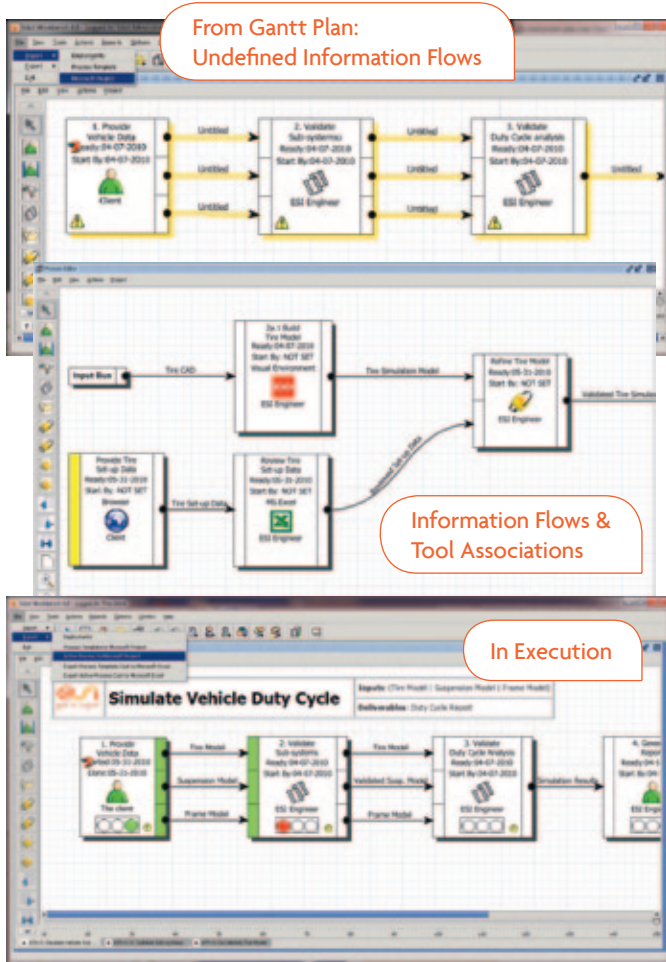
Vdot™ improves on project management benefits by adding easy and flexible workflow. This connects the plan to the work in a shared environment for planning, doing, and managing. By providing excellent information flow visibility, Vdot™ first ensures a good plan, then helps team-members execute to that plan, and automatically maintain status information in real-time. Current projects benefit from real-time status which also remains available for future improvement efforts.

- Better plans from **information flow visibility**.
- Better execution from **prioritized smart task delivery** (data, instructions, tool, schedule).
- Better management from automatic, **real-time visibility**.



Vdot™ Processes are easily built from project plans (or from scratch). Once in Vdot™, the plan actively helps team members perform the right work with the right data at the right time. Performing tasks automatically maintains status information in real time.

USE VDOT™ TO BETTER LEVERAGE YOUR MS PROJECT* CONTENT



DEFINE PROCESS FROM PROJECT STARTING DATA

1. Easily read project plan into Vdot™
 - a) Task owners, durations, effort from Project
 - b) Information flows undefined
2. Define information flows and tool associations
 - a) Add names and types to information flow links
 - b) This step usually modifies the MS Project network
3. Improve the process as desired
 - a) More rational information flows
 - b) Possible task automations

EXECUTE THE PROJECT WITH VDOT™

1. Activate the finished Vdot™ process
 - a) Whenever needed
 - b) On a regular schedule for periodic projects/processes
2. Perform tasks with prioritized smart task delivery
3. Real-time visibility
 - a) Vdot™ desktop and web clients
 - b) Direct and XML interfaces to other systems

Vdot™ is built on Java technology to support your multiple platform requirements.

* MS.PROJECT is a product of the Microsoft Corporation

For more information, please visit: www.esi-group.com/vdot

ABOUT ESI GROUP

ESI is a pioneer and world-leading provider in virtual prototyping that takes into account the physics of materials. ESI has developed an extensive suite of coherent, industry-oriented applications to realistically simulate a product's behavior during testing, to fine-tune manufacturing processes in accordance with desired product performance, and to evaluate the environment's impact on performance. ESI's solutions fit into a single collaborative and open environment for End-to-End Virtual Prototyping, thus eliminating the need for physical prototypes during product development. The company employs over 750 high-level specialists worldwide covering more than 30 countries. ESI Group is listed in compartment C of NYSE Euronext Paris. For further information, visit www.esi-group.com.



info@esi-group.com

EUROPE

BENELUX & SCANDINAVIA
ESI Group Netherlands
 Radex Innovation Centre
 room 4.57
 Rotterdamseweg 183 C
 2629 HD Delft
 The Netherlands
 T. +31 (0)15 268 2501
 F. +31 (0)15 268 2514

CZECH REPUBLIC & EASTERN EUROPE
MECAS ESI
 Brojova 2113/16
 326 00 Pilsen
 Czech Republic
 T. +420 377 432 931
 F. +420 377 432 930

FRANCE
ESI France
 Parc d'Affaires Silic
 99, rue des Solets - BP
 8012
 94513 Rungis cedex
 France
 T. +33 (0)1 49 78 28 00
 F. +33 (0)1 46 87 72 02

GERMANY
ESI GmbH
 Mergenthalerallee 15-21
 D-65760 Eschborn
 Germany
 T. +49 (0)6196 9583 0
 F. +49 (0)6196 9583 111

ITALY
ESI Italia
 Via San Donato 191
 40127 Bologna
 Italy
 T. +39 0516335577
 T. +39 0516335578
 F. +39 0516335601

SPAIN
ESI Group Hispania
 Parque Empresarial Arroyo de la Vega
 C/ Francisca Delgado,
 11 - planta 2ª
 28108 Alcobendas (Madrid)
 Spain
 T. +34 91 484 02 56
 F. +34 91 484 02 55

SWITZERLAND
Calcom ESI
 Parc Scientifique
 EPFL / PSE-A
 1015 Lausanne-EPFL
 Switzerland
 T. +41 21 693 2918
 F. +41 21 693 4740

UNITED KINGDOM
ESI UK
 16 Morston Court,
 Kingswood Lakeside,
 Cannock, WS11 8JB
 United Kingdom
 T. +44 (0) 1543397900
 F. +44 (0) 1543504898

AMERICAS

USA
ESI North America
 32605 W 12 Mile Road
 Suite 350
 Farmington Hills, MI
 48334-3379
 USA
 T. +1 (248) 381-8040
 F. +1 (248) 381-8998

USA
ESI North America
 6767 Old Madison Pike
 Suite 600
 Huntsville, AL 35806
 USA
 T. +1 (256) 713-4700
 F. +1 (256) 713-4799

SOUTH AMERICA
ESI South America
 Av. Pedrosa de Moraes,
 1619 cj.312
 São Paulo
 SP CEP 05419-001
 Brazil
 T./F. +55 (011) 3031-6221

ASIA

CHINA
ESI China
 Unit 1006-1008,
 Metropolis Tower
 No. 23 Haidiandongsanjie,
 Haidian District,
 Beijing, 100080
 China
 T. +86 (10)-65544907/8/9
 F. +86 (10)-65544911

INDIA
ESI India
 Indrakrupa #17, 100 feet
 ring road
 3rd phase, 6th block,
 Banashankari 3rd stage
 Bangalore 560 085
 India
 T. +91 80 4017 4747
 F. +91 80 4017 4705

JAPAN
ESI Japan
 5F and 16F Shinjuku Green
 Tower Bldg. 6-14-1,
 Nishi-Shinjuku
 Shinjuku-ku, Tokyo 160-0023
 Japan
 T. +81 3 6381 8490 / 8494
 F. +81 3 6381 8488 / 8489

KOREA
Hankook ESI
 157-033, 5F MISUNG
 bldg., 660-6,
 Deungchon-3Dong,
 Gangseo-ku,
 South Korea
 T. +82 2 3660 4500
 F. +82 2 3662 0084

SOUTH-EAST ASIA
ESI Group South-East Asia
 12, Jalan Dato Haji Harun,
 Taman Taynton, Cheras
 56000 Kuala Lumpur
 Malaysia
 T. +60 (12) 6181014