



ESI attends the 10th Teratec Forum for the Development of High Performance Computing

And announces the creation of ESI's European HPC center

Paris, France – June 23, 2015 – [ESI Group](#), pioneer and world-leading solution provider in [Virtual Prototyping](#) for manufacturing industries, will attend the 10th [Teratec Forum](#) at the Ecole Polytechnique in Palaiseau, June 23 & 24. A founding member of the organization, ESI has supported [Teratec](#) for the past decade. Today, Teratec plays a leading role in accelerating the developments of High Performance Computing in Europe. For this reason, ESI has chosen the [Teratec Campus](#), near Paris, to host its new European HPC center which is due to open this summer.

In a highly competitive global context, European countries are engaging in digital strategies as a means to increase their industrial competitiveness. Ten years ago, leading French industrial companies, R&D centers and local authorities joined forces to create the non-profit association [Teratec](#), aimed at supporting innovation through High-Performance Computing.

[Teratec](#)'s role includes the creation and the promotion of French and European [R&D projects](#) led in conjunction with industrial players, technology providers, research centers and competitiveness clusters. Teratec also supports small and medium businesses in adopting HPC solutions, organizes training, and sets-up international partnerships. To promote the use of HPC, Teratec organizes seminars and the annual [Teratec Forum](#): a two-day conference and tradeshow gathering HPC experts from all Europe. This coming June 23 & 24, ESI will attend the 10th Teratec Forum at the Ecole Polytechnique in Palaiseau, France.

2012 marked the opening of the [Teratec Campus](#), a 13 000 m² site hosting key HPC players such as BULL, CEA, Intel, Silkan, Avantis Technologies, CMI Defence and ESI Group. The Campus is also home to the CEA's "[Très Grand Centre de Calcul](#)" or TGCC – Europe's largest HPC center. The TGCC now features France's first Petascale machine, [Curie](#), with a total computing capacity in excess of 2 petaflops, and the next generation [Computing Center for Research and Technology](#) (CCRT). The Curie has been instrumental in running large calculations for state-of-the-art simulation projects such as the PRACE project "[FMOC – Fast Multiphysics Optimization of a Car](#)" led by Renault, ESI Group, Ecole Centrale de Lyon and the Ecole Nationale Supérieure des Mines de Saint-Etienne. The FMOC used models with more than 20 million finite elements to simulate a car crash and to accurately predict the vehicle's performance with the objective of improving passenger safety.

This summer, ESI will open its own European HPC center on the Teratec Campus. **Vincent Chaillou**, COO of ESI Group, comments, "*ESI strives to push the boundaries of simulation in support of industrial innovation. To this aim, ESI's new European HPC Center will offer a robust and secure platform enabling ESI to meet the needs of its European customer base. The vicinity of*



the TGCC and leading solution providers offers an ideal setting to foster innovative industrial and R&D projects.”

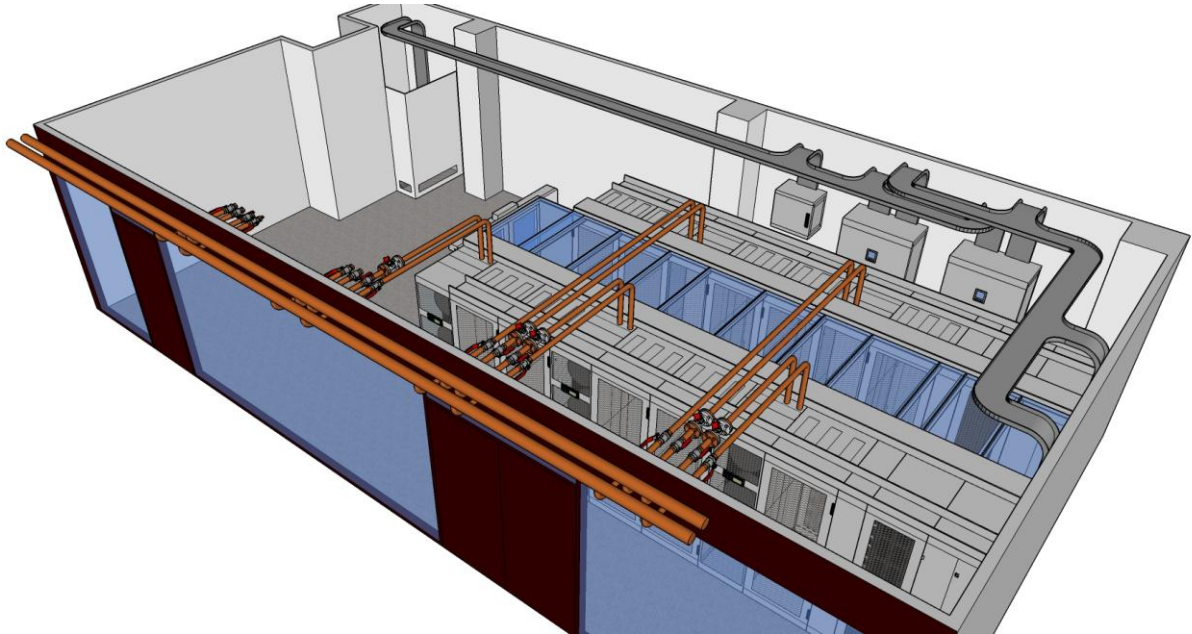


Image: Plans for ESI's new European HPC Center in Bruyères-le-Chatel, near Paris.

For more ESI news, visit: www.esi-group.com/press

ESI Group – Media Relations

[Céline Gallerne](#)

+33 1 41 73 58 46

For additional information, please feel free to contact our international communications team:

North America

[Natasha Petrous](#)

+1 248 3818 661

Germany, Austria, Switzerland

[Alexandra Lawrenz](#)

+49 6102 2067 183

South America

[Daniela Galolfo](#)

+55 11 3031 6221

United Kingdom

[Hannah Amiss](#)

+44 1543 397 905

Italy

[Maddalena Marinucci](#)

+39 051 633 5577

Japan

[Nozomi Suzuki](#)

+81 363818486

France

[Gaëlle Lecomte](#)

+33 4 7814 1210

Spain

[Monica Arroyo Prieto](#)

+34 914840256

South Korea

[Gyeong Hee Lee](#)

+822 3660 4507

Eastern Europe

[Lucie Sebestova](#)

+420 511188875

Russia

[Natalia Nesvetova](#)

+7 343 311 0233

China

[Jin Bai](#)

+86 18618146267

About ESI Group

ESI is a world-leading provider of Virtual Product Engineering software and services with a strong foundation in the physics of the materials of which products are built.



Founded over 40 years ago, [ESI](#) has developed a unique proficiency in helping industrial manufacturers replace physical prototypes by virtually replicating the fabrication, assembly and testing of products in different environments. [Virtual Prototyping](#) enables [ESI](#)'s clients to evaluate the performance of their product, and the consequences of its manufacturing history, under normal or accidental conditions. By benefiting from this information early in the process, enterprises know whether a product can be built, and whether it will meet its performance and certification objectives, before any physical prototype is built. To enable customer innovation, [ESI](#)'s solutions integrate the latest technologies in high performance computing and immersive Virtual Reality, allowing companies to bring products to life before they even exist.

Today, [ESI](#)'s customer base spans nearly every industry sector. The company employs about 1000 high-level specialists worldwide to address the needs of customers in more than 40 countries. For further information, visit www.esi-group.com.

Connect with ESI on    