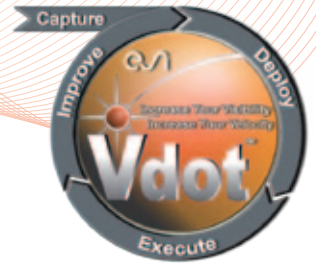




Vdot™ - LEAN WORK MANAGEMENT

WORKFLOW & PROJECT MANAGEMENT
FOR BETTER PROJECT EXECUTION

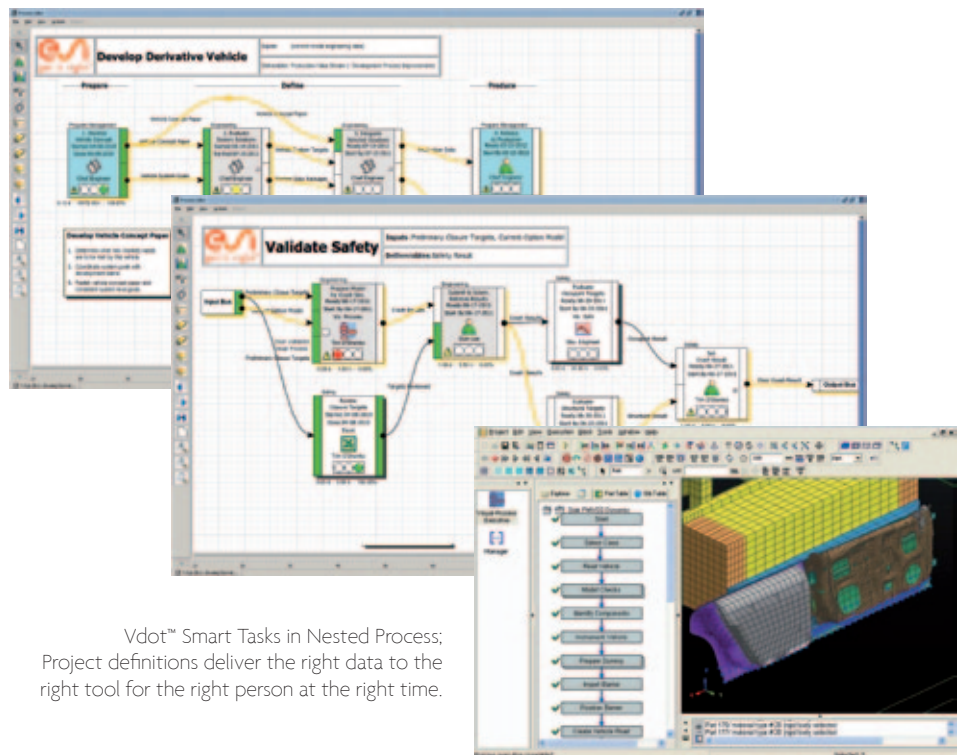


QUESTIONS

- What is most important to do next?
- How should it be done?
- Where is the data?
- Who needs my deliverables?
- Are we on schedule?
- Are we on budget?
- What is being worked on now?
- Does this plan give people the needed inputs for their tasks?

Vdot™ ensures optimal plans, ensures all team members perform the right task at the right time with the right data, and automatically provides visibility in real-time for current project management or future improvement efforts.

Vdot™ does this with a shared environment where the plans and processes are connected to the work. Vdot™'s planning environment stresses information flows rather than simple task sequencing. Vdot™ uses this information flow definition to actually flow the information from task to task, person to person and tool to tool. This lets Vdot™ deliver the data, instructions and software applications for the right work (highest priority in the plan) at the right time for the right team members.



Vdot™ Smart Tasks in Nested Process; Project definitions deliver the right data to the right tool for the right person at the right time.

ANSWERS

- Prioritized smart task delivery.
- Visible information flows.
- Automatic, real-time status from teams getting work (task, data, instructions, tools) from Vdot™.

“Vdot™ was invaluable in managing a development project with a very distributed engineering team, spread across several disciplines and development tools.”

Roger Herdy, Program Manager for Qualis Corporation, NASA Marshall Space Flight Center.

REAL-TIME STATUS FROM WEB OR RICH CLIENT DASHBOARDS



Vdot™ provides your entire team with direct access to your best practices from anywhere, leading them through each step while automatically capturing status as the work is performed. Managers and team members get real-time dashboards and task lists to keep critical projects on track.

- **Gantt View** – see task status (baseline, actual, projected) in the industry standard format.
- **Quick Look** – instantly identify bottlenecks in your active projects and take corrective action.
- **Resource Dashboard** – view team performance and workload; resolve scheduling conflicts.
- **Results** – view hierarchical requirements status (Pass / Fail / Not Set) and quickly see problem areas.

LEARN FROM PAST EXPERIENCE

Use Vdot™ process templates to manage the knowledge of your organization in a concise visual format that is ready for deployment, execution and continuous improvement.

- Retain the process knowledge of retiring experts.
- Bring new-hires up to speed quickly.
- Manage personnel turn-over on critical projects.

Vdot™ is built on Java technology to support your multiple platform requirements.

For more information, please visit: www.esi-group.com/vdot

ABOUT ESI GROUP

ESI is a pioneer and world-leading provider in virtual prototyping that takes into account the physics of materials. ESI has developed an extensive suite of coherent, industry-oriented applications to realistically simulate a product's behavior during testing, to fine-tune manufacturing processes in accordance with desired product performance, and to evaluate the environment's impact on performance. ESI's solutions fit into a single collaborative and open environment for End-to-End Virtual Prototyping, thus eliminating the need for physical prototypes during product development. The company employs over 750 high-level specialists worldwide covering more than 30 countries. ESI Group is listed in compartment C of NYSE Euronext Paris. For further information, visit www.esi-group.com.



EUROPE

BENELUX & SCANDINAVIA

ESI Group Netherlands
Radex Innovation Centre
room 4.57
Rotterdamseweg 183 C
2629 HD Delft
The Netherlands
T. +31 (0)15 268 2501
F. +31 (0)15 268 2514

CZECH REPUBLIC & EASTERN EUROPE

MECAS ESI
Brojova 2113/16
326 00 Pilsen
Czech Republic
T. +420 377 432 931
F. +420 377 432 930

FRANCE

ESI France
Parc d'Affaires Silic
99, rue des Solets - BP
8012
94513 Rungis cedex
France
T. +33 (0)1 49 78 28 00
F. +33 (0)1 46 87 72 02

GERMANY

ESI GmbH
Mergenthalerallee 15-21
D-65760 Eschborn
Germany
T. +49 (0)6196 9583 0
F. +49 (0)6196 9583 111

ITALY

ESI Italia
Via San Donato 191
40127 Bologna
Italy
T. +39 0516335577
T. +39 0516335578
F. +39 0516335601

SPAIN

ESI Group Hispania
Parque Empresarial Arroyo de la Vega
de la Vega
C/ Francisco Delgado,
11 - planta 2ª
28108 Alcobendas (Madrid)
Spain
T. +34 91 484 02 56
F. +34 91 484 02 55

SWITZERLAND

Calcom ESI
Parc Scientifique
EPFL / PSE-A
1015 Lausanne-EPFL
Switzerland
T. +41 21 693 2918
F. +41 21 693 4740

UNITED KINGDOM

ESI UK
16 Morston Court,
Kingswood Lakeside,
Cannock, WS11 8JB
United Kingdom
T. +44 (0) 1543397900
F. +44 (0) 1543504898

AMERICAS

USA

ESI North America

32605 W 12 Mile Road
Suite 350
Farmington Hills, MI
48334-3379
USA
T. +1 (248) 381-8040
F. +1 (248) 381-8998

USA

ESI North America

6767 Old Madison Pike
Suite 600
Huntsville, AL 35806
USA
T. +1 (256) 713-4700
F. +1 (256) 713-4799

SOUTH AMERICA

ESI South America

Av. Pedrosa de Moraes,
1619 cj.312
São Paulo
SP CEP 05419-001
Brazil
T./F. +55 (011) 3031-6221

ASIA

CHINA

ESI China

Unit 1006-1008,
Metropolis Tower
No. 2 Haidiandongsanjie,
Haicidian District,
Beijing, 100080
China
T. +86 (0)-65544907/8/9
F. +86 (0)-65544911

INDIA

ESI India

Indrakrupa #17, 100 feet
ring road
3rd phase, 6th block,
Banashankari 3rd stage
Bangalore 560 085
India
T. +91 80 4017 4747
F. +91 80 4017 4705

JAPAN

ESI Japan

SF and 16F Shinjuku Green
Tower Bldg. 6-14-1,
Nishi-Shinjuku
Shinjuku-ku, Tokyo 160-0023
Japan
T. +81 3 6381 8490 / 8494
F. +81 3 6381 8488 / 8489

KOREA

Hankook ESI

157-033, 5F MISUNG
bldg., 660-6,
Deungchon-3Dong,
Gangseo-ku,
South Korea
T. +82 2 3660 4500
F. +82 2 3662 0084

SOUTH-EAST ASIA

ESI Group South-East Asia

12, Jalan Dato Haji Harun,
Taman Taynton, Cheras,
56000 Kuala Lumpur
Malaysia
T. +60 (0) 2 6181014