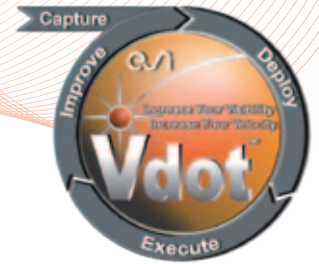




Vdot™ AND DATA MANAGEMENT SYSTEMS

MANAGING DATA ACROSS MULTIPLE SYSTEMS



QUESTIONS

- Where is the data for my task?
- What tool can use that data?
- Who provided the data?
- Who needs my deliverables?
- Where is the data from process X for project Y?
- Who made that data?
- What were the inputs?
- What tool was used?

ANSWERS

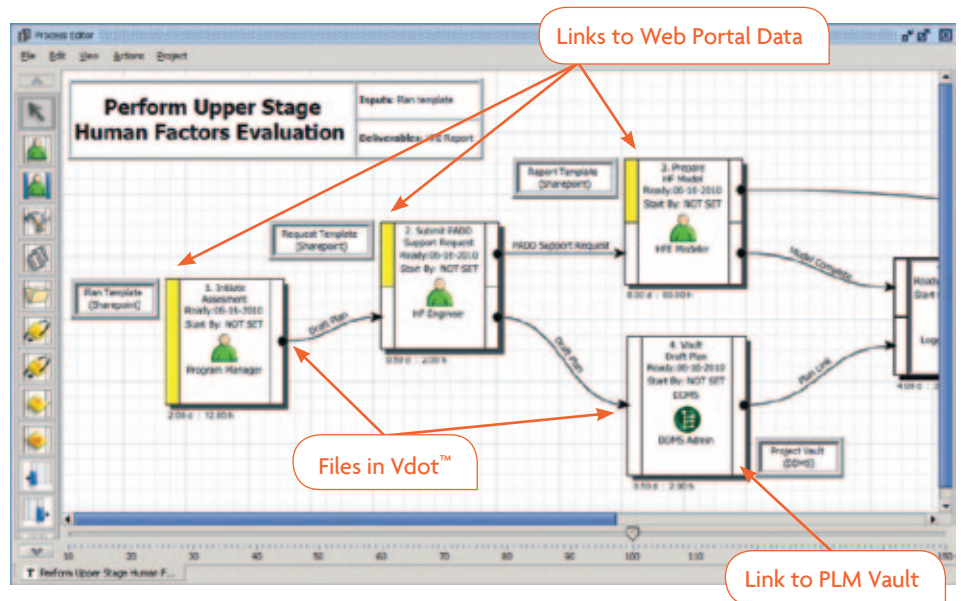
- Prioritized smart task delivery.
- Visible information flows with flexible links to diverse data repositories.
- Delivers inputs to the right tools/task/person at the right time.
- Delivers outputs to the right tool/task/person at the right time.
- Automatically maintains a run history of the project/process - who did what, when, and with what inputs to make what deliverables.

Vdot™ ensures optimal plans, ensures all team members perform the right task at the right time with the right data, and automatically provides visibility in real-time for current project management or future improvement efforts. To do so, **Vdot™ is able to keep track of project data in diverse systems such as PLM, web portal, network drives and (as a default) the Vdot™ file system.**

Vdot™ processes often involve data flows from task to task and tool to tool where the data is managed in one or more external systems (e.g. PLM, web portal, ...). These flows are defined by the links between the deliverables and the input data items on Vdot™ Smart Tasks. The Smart Task is the basic building bloc in Vdot™ lean projects/processes.

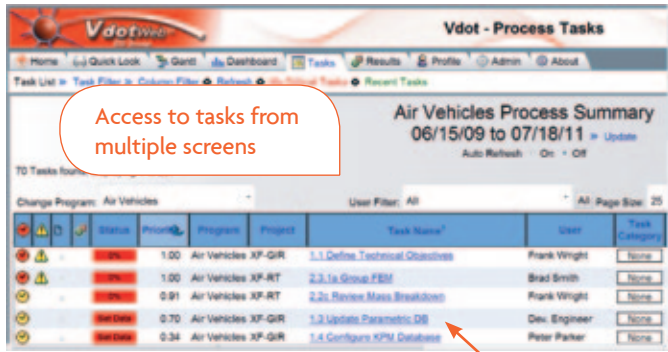
In addition to standard project management parameters, a Smart Task includes a complete definition of what input items are needed, where they came from, what deliverables need to be made, where they are to be delivered, how they are to be created, using what software application. Vdot™ provides the inputs and routes the deliverables for efficient and visible project execution.

The actual data items (the task inputs and deliverables) can be in the Vdot™ file system, or any network resource like a shared drive, PLM, or web portal system. Each data item is accessible via the project/process definition. **While no data searching is necessary for task execution, the data can be accessed as needed based on how it was made, not where it was filed.** If the data is in a managed system (e.g. PLM) then it is also accessible based on where it was filed.



Example Vdot™ Process delivers the right data to the right tool for the right person at the right time from **multiple managed data systems.**

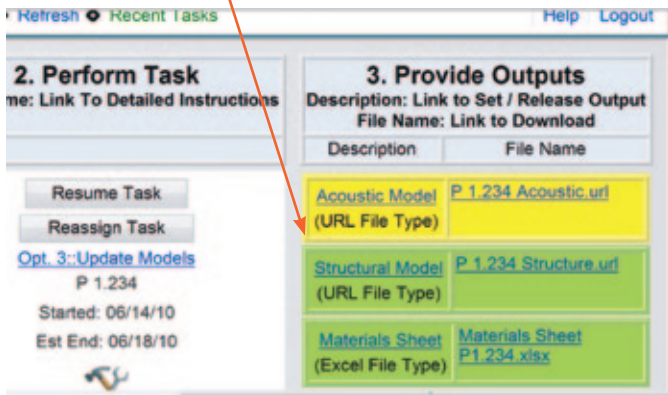
LINKS TO DATA FROM MULTIPLE POINTS IN VDOT™



Access to tasks from multiple screens

Links to task details

Example: Links to external systems and a file in the Vdot™ file system.



Vdot™ provides your entire team with controlled, direct access to data in the processes that make up the projects in your system. Data is accessible from the Smart Task details, which in turn are accessible from:

- **Task Lists** (Individual, Team, Project/Sub-process)
- **Quick Looks** (a project list of active/ready tasks)
- **Critical Results Reports** (Pass / Fail by process / product element)
- **Gantt Charts**

Access control groups can be assigned to people and to different areas of the project/sub-processes. When a data item is in an externally managed system Vdot™ respects the external system's security. Access to data can be controlled by any combination of:

- External system (PLM, ...) security
- Vdot™ access control groups

Vdot™ has two modes of data access: while executing a task, and ad-hoc. Both cases support internally or externally managed data items.

- Executing a task - automatic data flow with the associated tool using links or files as defined in Vdot™.
- Ad-Hoc Access - process-based search to files or links with the ability to use a tool to view the data item.

Vdot™ is built on Java technology to support your multiple platform requirements.

For more information, please visit: www.esi-group.com/vdot

ABOUT ESI GROUP

ESI is a pioneer and world-leading provider in virtual prototyping that takes into account the physics of materials. ESI has developed an extensive suite of coherent, industry-oriented applications to realistically simulate a product's behavior during testing, to fine-tune manufacturing processes in accordance with desired product performance, and to evaluate the environment's impact on performance. ESI's solutions fit into a single collaborative and open environment for End-to-End Virtual Prototyping, thus eliminating the need for physical prototypes during product development. The company employs over 750 high-level specialists worldwide covering more than 30 countries. ESI Group is listed in compartment C of NYSE Euronext Paris. For further information, visit www.esi-group.com.



info@esi-group.com

EUROPE

BENELUX & SCANDINAVIA

ESI Group Netherlands
Radox Innovation Centre
room 4.57
Rotterdamseweg 183 C
2629 HD Delft
The Netherlands
T. +31 (0)15 268 2501
F. +31 (0)15 268 2514

CZECH REPUBLIC & EASTERN EUROPE

MECAS ESI
Brojova 2113/16
326 00 Pilsen
Czech Republic
T. +420 377 432 931
F. +420 377 432 930

FRANCE

ESI France
Parc d'Affaires Silic
99, rue des Solets - BP
8012
94513 Rungis cedex
France
T. +33 (0)1 49 78 28 00
F. +33 (0)1 46 87 72 02

GERMANY

ESI GmbH
Mergenthalerallee 15-21
D-65760 Eschborn
Germany
T. +49 (0)6196 9583 0
F. +49 (0)6196 9583 111

ITALY

ESI Italia
Via San Donato 191
40127 Bologna
Italy
T. +39 0516335577
T. +39 0516335578
F. +39 0516335601

SPAIN

ESI Group Hispania
Parque Empresarial Arroyo de la Vega
de la Vega
C/ Francisco Delgado,
11 - planta 2ª
28108 Alcobendas (Madrid)
Spain
T. +34 91 484 02 56
F. +34 91 484 02 55

SWITZERLAND

Calcom ESI
Parc Scientifique
EPFL / PSE-A
1015 Lausanne-EPFL
Switzerland
T. +41 21 693 2918
F. +41 21 693 4740

UNITED KINGDOM

ESI UK
16 Morston Court,
Kingswood Lakeside,
Cannock, WS11 8JB
United Kingdom
T. +44 (0) 1543397900
F. +44 (0) 1543504898

AMERICAS

USA

ESI North America
32605 W 12 Mile Road
Suite 350
Farmington Hills, MI
48334-3379
USA
T. +1 (248) 381-8040
F. +1 (248) 381-8998

USA

ESI North America
6767 Old Madison Pike
Suite 600
Huntsville, AL 35806
USA
T. +1 (256) 713-4700
F. +1 (256) 713-4799

SOUTH AMERICA

ESI South America
Av. Pedrosa de Moraes,
1679 cj.312
São Paulo
SP CEP 05419-001
Brazil
T./F. +55 (011) 3031-6221

ASIA

CHINA

ESI China
Unit 1006-1008,
Metropolis Tower
No. 2 Haidiandongsanjie,
Haicidian District,
Beijing, 100080
China
T. +86 (10)-65544907/8/9
F. +86 (10)-65544911

INDIA

ESI India
Indrakrupa #17, 100 feet
ring road
3rd phase, 6th block,
Banashankari 3rd stage
Bangalore 560 085
India
T. +91 80 4017 4747
F. +91 80 4017 4705

JAPAN

ESI Japan
5F and 16F Shinjuku Green
Tower Bldg. 6-14-1,
Nishi-Shinjuku,
Shinjuku-ku, Tokyo 160-0023
Japan
T. +81 3 6381 8490 / 8494
F. +81 3 6381 8488 / 8489

KOREA

Hankook ESI
157-033, 5F MISUNG
bldg, 660-6,
Deungchon-3Dong,
Gangseo-ku,
South Korea
T. +82 2 3660 4500
F. +82 2 3662 0084

SOUTH-EAST ASIA

ESI Group South-East Asia
12, Jalan Dato Haji Harun,
Taman Taynton, Cheras,
56000 Kuala Lumpur
Malaysia
T. +60 (12) 6181014