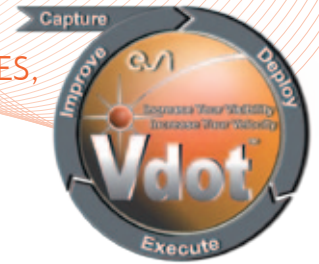




VDOT™ - COMPLEMENTS PLM

FLEXIBLE LEAN WORK MANAGEMENT
ORCHESTRATES DIVERSE TEAM PROCESSES,
DATA SOURCES AND CONTROLLED
CAD LIFECYCLES



PRODUCT LIFECYCLE MANAGEMENT

- Good control of CAD and closely related data (the PDM Vault).
- Rigid Part/Assembly Lifecycle definition and execution.
- Shared Gantt charting tool not well integrated with Lifecycles.
- Reduces CAD related cycle times and costs.

VDOT™

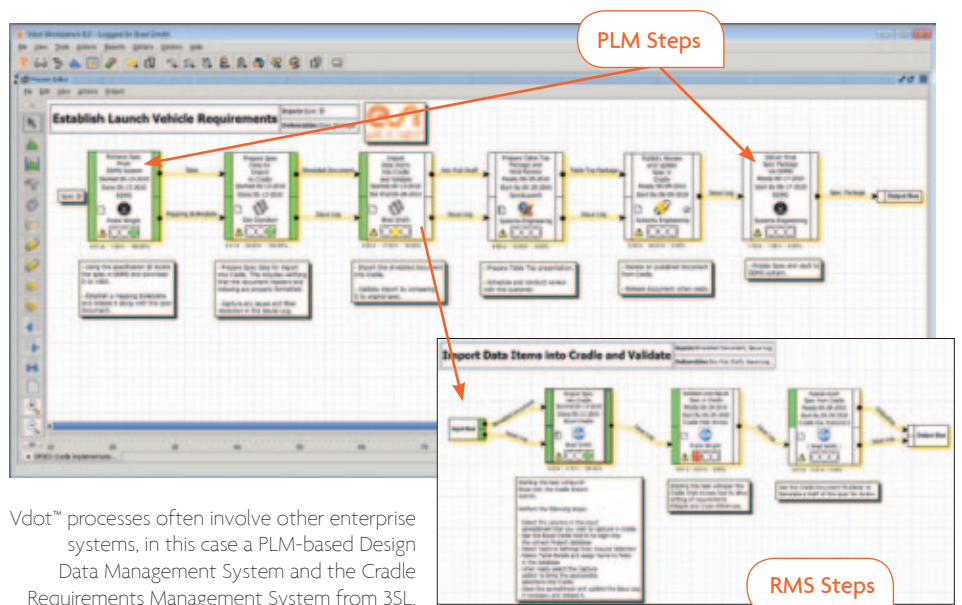
- Superior **information flow** visibility.
- Project management **completely integrated** with workflow.
- **Easy and flexible for team members** to define / modify / execute any process.
- Easy to use **with diverse data flows** (CAE, Office, CAD, ...).
- Can **share context** (Project, Version, Group, ...) with data management systems (PLM, SLM, Web Portal...).
- Reduces **product development** related cycle times and costs.

Process owners themselves easily define, execute and manage project processes with unsurpassed information flow visibility involving diverse applications, data formats and data stores - including PDM and PLM Lifecycles - with Vdot™.

PLM systems provide product development designers two important benefits: a data vault to manage CAD parts and assembly hierarchies, and CAD "Lifecycle" management (the sequences of steps that happen to an object in the vault). A Lifecycle can be associated with a Gantt chart task, but the individual Lifecycle steps lack project management attributes. Lifecycles are typically implemented by trained IT staff and are difficult to modify if needed.

Not designed to replace PLM systems, Vdot™ can leverage the part hierarchy management in PLM systems but does not provide that function itself. Vdot™'s workflow + project management environment is significantly different from PLM Lifecycles (though superficially similar). Poorly linked in PLM, the complete integration of workflow and project management in Vdot™ gives several advantages. Each sub-process or atomic step in Vdot™ has project management attributes. Therefore the project/processes can be tracked to any level of detail needed. Different sub-project workflows are not separated by a disjoint Gantt chart tool so information flows between Lifecycles or sub-processes are clearly defined and well managed.

Unlike PLM Lifecycles, Vdot™ workflows clearly define all the needed information flows between tasks. Tasks have as many inputs and deliverables of as many formats as needed. They can be assigned to human resources and associated with any needed application (CAE, office productivity, data management, ...). This is all done in a **graphical interface designed for process owners themselves without the need for any coding.**

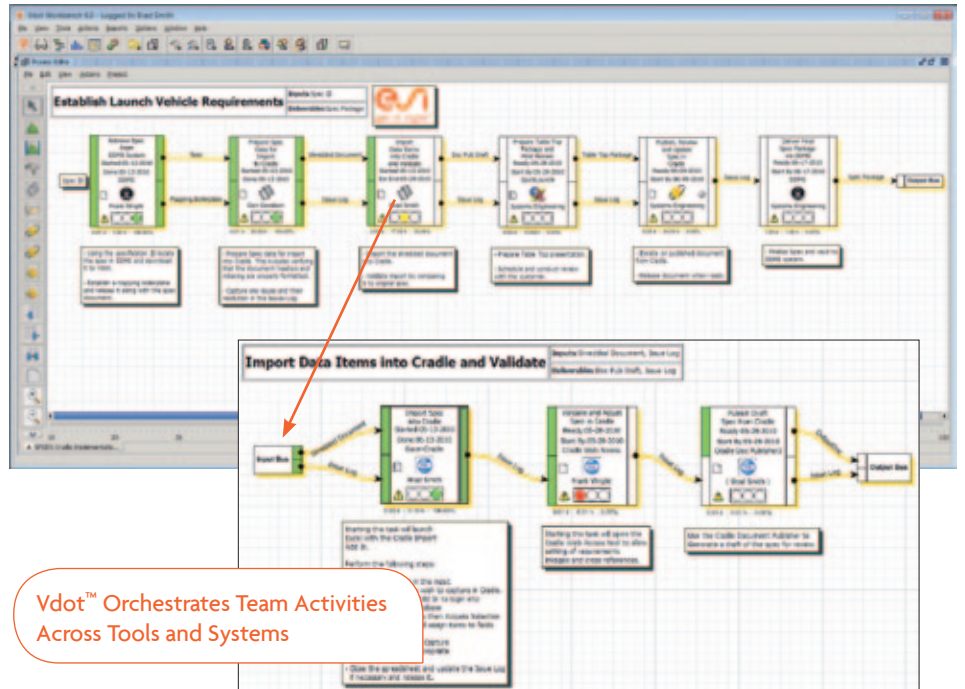


Vdot™ processes often involve other enterprise systems, in this case a PLM-based Design Data Management System and the Cradle Requirements Management System from 3SL.

USE VDOT™ TO MANAGE YOUR PROJECT AND COORDINATE YOUR CAD AND NON-CAD PROCESSES

Teams using Vdot™ often use PLM and other systems (SLM, Web Portal, ...) to manage some of their data. Vdot™ does provide a level of data management for “free” as data is flowed between steps in the defined processes. The process definition provides the schema, no additional work is necessary to manage the data. The Vdot™ process defined schema may be all that is needed. Also, the process may involve data flows between disparate systems, including the default Vdot™ managed file system.

Typically, when a PLM or other system is involved several such systems are involved (e.g. PLM(s) + Web Portal + shared drives). In this case the actual inputs and deliverables are stored in the various systems and Vdot™ manages the flows between them. The CAD Lifecycles are typically defined and executed in the PLM system. These Lifecycles are orchestrated with the rest of the project activities by the Vdot™ process. In a similar manner, task automations in a platform like Visual Basic or ESI's Visual-Process Executive are managed by Vdot™. In the case where CAD Lifecycle flexibility is more important than rigid control these processes can be done in Vdot™ as well.



Vdot™ is built on Java technology to support your multiple platform requirements.

For more information, please visit: www.esi-group.com/vdot

ABOUT ESI GROUP

ESI is a pioneer and world-leading provider in virtual prototyping that takes into account the physics of materials. ESI has developed an extensive suite of coherent, industry-oriented applications to realistically simulate a product's behavior during testing, to fine-tune manufacturing processes in accordance with desired product performance, and to evaluate the environment's impact on performance. ESI's solutions fit into a single collaborative and open environment for End-to-End Virtual Prototyping, thus eliminating the need for physical prototypes during product development. The company employs over 750 high-level specialists worldwide covering more than 30 countries. ESI Group is listed in compartment C of NYSE Euronext Paris. For further information, visit www.esi-group.com.



EUROPE

BENELUX & SCANDINAVIA
ESI Group Netherlands
 Radex Innovation Centre
 room 4.57
 Rotterdamseweg 183 C
 2629 HD Delft
 The Netherlands
 T. +31 (0)15 268 2501
 F. +31 (0)15 268 2514

CZECH REPUBLIC & EASTERN EUROPE
MECAS ESI
 Brojova 2113/16
 326 00 Pilsen
 Czech Republic
 T. +420 377 432 931
 F. +420 377 432 930

FRANCE
ESI France
 Parc d'Affaires Silic
 99, rue des Solets - BP
 8012
 94513 Rungis cedex
 France
 T. +33 (0)1 49 78 28 00
 F. +33 (0)1 46 87 72 02

GERMANY
ESI GmbH
 Mergenthalerallee 15-21
 D-65760 Eschborn
 Germany
 T. +49 (0)6196 9583 0
 F. +49 (0)6196 9583 111

ITALY
ESI Italia
 Via San Donato 191
 40127 Bologna
 Italy
 T. +39 0516335577
 F. +39 0516335601

SPAIN
ESI Group Hispania
 Parque Empresarial Arroyo
 de la Vega
 C/ Francisca Delgado,
 11 - planta 2ª
 28108 Alcobendas (Madrid)
 Spain
 T. +34 91 484 02 56
 F. +34 91 484 02 55

SWITZERLAND
Calcom ESI
 Parc Scientifique
 EPFL / PSE-A
 1015 Lausanne-EPFL
 Switzerland
 T. +41 21 693 2918
 F. +41 21 693 4740

UNITED KINGDOM
ESI UK
 16 Morston Court,
 Kingswood Lakeside,
 Cannock, WS11 8JB
 United Kingdom
 T. +44 (0) 1543397900
 F. +44 (0) 1543504898

AMERICAS

USA
ESI North America
 32605 W 12 Mile Road
 Suite 350
 Farmington Hills, MI
 48334-3379
 USA
 T. +1 (248) 381-8040
 F. +1 (248) 381-8998

USA
ESI North America
 6767 Old Madison Pike
 Suite 600
 Huntsville, AL 35806
 USA
 T. +1 (256) 713-4700
 F. +1 (256) 713-4799

SOUTH AMERICA
ESI South America
 Av. Pedrosa de Moraes,
 1619 cj.312
 São Paulo
 SP CEP 05419-001
 Brazil
 T./F. +55 (011) 3031-6221

ASIA

CHINA
ESI China
 Unit 1006-1008,
 Metropolis Tower
 No. 2 Haidiandongsanjie,
 Haidian District,
 Beijing, 100080
 China
 T. +86 (10)-65544907/8/9
 F. +86 (10)-65544911

INDIA
ESI India
 Indrakrupa #17, 100 feet
 ring road
 3rd phase, 6th block,
 Banashankari 3rd stage
 Bangalore 560 085
 India
 T. +91 80 4017 4747
 F. +91 80 4017 4705

JAPAN
ESI Japan
 5F and 16F Shinjuku Green
 Tower Bldg. 6-14-1,
 Nishi-Shinjuku
 Shinjuku-ku, Tokyo 160-0023
 Japan
 T. +81 3 6381 8490 / 8494
 F. +81 3 6381 8488 / 8489

KOREA
Hankook ESI
 157-033, 5F MISUNG
 bldg., 660-6,
 Deungchon-3Dong,
 Gangseo-ku,
 South Korea
 T. +82 2 3660 4500
 F. +82 2 3662 0084

SOUTH-EAST ASIA
ESI Group South-East Asia
 12, Jalan Dato Haji Harun,
 Taman Taynton, Cheras
 56000 Kuala Lumpur
 Malaysia
 T. +60 (12) 6181014