



STRUCTURAL CRASH ANALYSIS

FOR AUTOMOTIVE



KEY BENEFITS

- Use one simulation model to run all performance tests
- Increase Productivity
- Lower indirect costs
- Gain Time
- Drive Innovations

“Using Virtual Performance Solution, we were able to meet the targeted performance in our design. We had very accurate results especially in the assessment of structural failure scenarios in crash conditions using ESI-Wilkins-Kamoulakos (EWK) damage and rupture model. ESI Group supports our product innovation by offering an all-inclusive scalable simulation solution: Virtual Performance Solution allows cost and time savings in our Product Development Cycle.”

Kazuhiro OBAYASHI,
Integrated CAE Department Manager,
NISSAN MOTOR CO. LTD.

A DEDICATED SOLUTION

Virtual prototyping plays an important role in the Product Development Cycle for Automotive industry leaders. It improves qualitative management and speeds up time-to-market. ESI's Virtual Performance Solution is a highly versatile software application package addressing market needs for scalable simulation solutions and Multi-Domain Optimization. Large models can be calculated in DMP (Distributed Memory Parallel) mode enabling outstanding performances.

Elaborated hand in hand with Automotive OEMs and their suppliers worldwide, Virtual Performance Solution enables workflow automation, integration of relevant disciplines and considers the impact of manufacturing processes.



Škoda Superb frontal impact: 5 stars at EuroNCAP crash test certification
Courtesy of SKODA AUTO

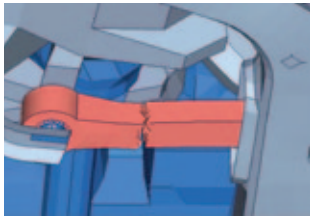
MANUFACTURING EFFECTS

From a CAD based model, Virtual Performance Solution, with its structural crash application PAM-CRASH, allows you to design a virtual prototype. It offers predictive and realistic simulation from virtual manufacturing to virtual testing analysis.

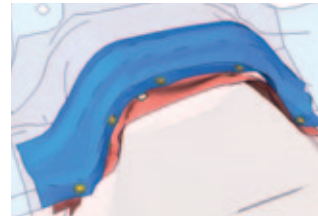
Virtual manufacturing analyses take into account manufacturing effects by chaining the simulation of casting, stamping, composites forming and continuous welding processes.

MULTI-SCALE MODELING

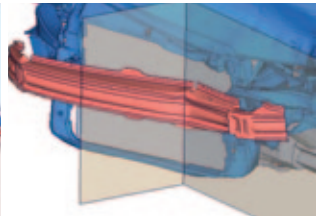
Modeling local areas in detail requires a more refined mesh and consequently longer calculation time. With Multi-Model Coupling, PAM-CRASH and related products enable, in a very efficient way, the use of fine local meshes.



Detailed torque brace



3D Spot welds



Detailed bumper system

Courtesy of SKODA AUTO

Rather than impose the calculation to the whole structure, PAM-CRASH isolates the areas with refined mesh and makes them run simultaneously, using subcycling technology.

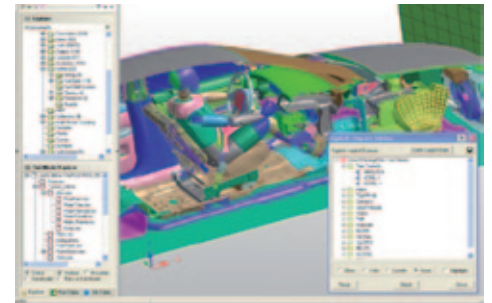
Multi-scale modeling helps simulate material failure using rupture models, including EWK (ESI-Wilkins-Kamoulakos) model or other models, with an acceptable calculation time. It saves overall computation time and increases flexibility and performance.

Multi-Scale Modeling facilitates also model assembly, for instance to easily set up a car-to-car crash model.

A COLLABORATIVE ENVIRONMENT

Virtual Performance Solution includes a dedicated Graphical User Interface for Pre- and Post-processing: Visual-Environment. Using this integrated framework enables parallel and collaborative engineering work in the development tasks.

Offering users ultimate flexibility, Virtual Performance Solution is also open to third-party or proprietary products.

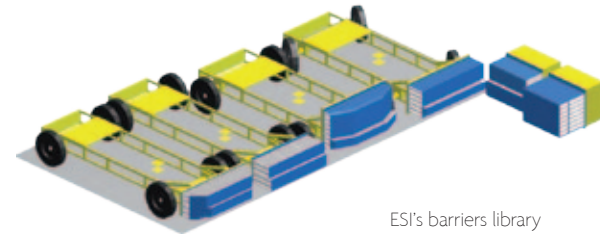


Post-processing with Visual-Crash PAM, the dedicated application for crash simulation within Visual-Environment

COMPUTE MODEL LIBRARY

ESI offers a broad and fully validated compute model library comprised mainly of crash dummy models, human models and barrier models.

ESI has developed and keeps enhancing a new set of crash test barrier models within a consortium project with automotive manufacturers. Members of the consortium have brought an extensive set of experimental data and largely contributed to the validation of the models. The new library covers current regulatory barriers for frontal and side impact tests: frontal offset deformable barrier (ODB, R94), NHTSA (FMVSS 214/301), European (Advanced, R95) and IIHS mobile deformable barriers. Models are also available for newer barrier designs, candidates for future regulations: AE-MDB for side impact and PDB for frontal impact and compatibility. ESI offers a choice of two models for aluminum honeycomb structures: a high fidelity model based on shell elements, and a faster model, based on solid elements.



ESI's barriers library

For more information, visit: www.esi-group.com/virtual-performance-solution/structural-crash

ABOUT ESI GROUP

ESI is a world-leading supplier and pioneer of digital simulation software for prototyping and manufacturing processes that take into account the physics of materials. ESI has developed an extensive suite of coherent, industry-oriented applications to realistically simulate a product's behavior during testing, to fine-tune manufacturing processes in accordance with desired product performance, and to evaluate the environment's impact on product performance. ESI's products represent a unique collaborative and open environment for Simulation-Based Design, enabling virtual prototypes to be improved in a continuous and collaborative manner while eliminating the need for physical prototypes during product development. The company employs over 750 high-level specialists worldwide covering more than 30 countries. ESI Group is listed in compartment C of NYSE Euronext Paris. For further information, visit www.esi-group.com.



EUROPE

CZECH REPUBLIC & EASTERN EUROPEAN COUNTRIES

MECAS ESI s.r.o.
Brojova 2113/16
326 00 Pilsen
Czech Republic
T. +420 377 432 931
F. +420 377 432 930

FRANCE ESI France

Parc d'Affaires Silic
99, rue des Soletts - BP
80112
94513 Rungis cedex
France
T. +33 (0)1 49 78 28 00
F. +33 (0)1 46 87 72 02

GERMANY ESI GmbH

Sales & Technical
Headquarters
Mergenthalerallee 15-21
D-65760 Eschborn
Germany
T. +49 (0)6196 9583 0
F. +49 (0)6196 9583 111

ITALY ESI Italia srl

Via San Donato 191
40127 Bologna
Italy
T. +39 0516335577
F. +39 0516335578
F. +39 0516335601

SPAIN ESI GROUP HISPANIA, S.L.

Parque Empresarial Arroyo de la Vega
C/ Francisca Delgado,
11 - planta 2ª
28108 Alcobendas (Madrid)
Spain
T. +34 91 484 02 56
F. +34 91 484 02 55

SWITZERLAND Calcom ESI SA

Parc Scientifique
EPFL / PSE-A
1015 Lausanne-EPFL
Switzerland
T. +41 21 693 2918
F. +41 21 693 4740

UNITED KINGDOM ESI-UK Ltd.

The Magdalen Centre
Oxford Science Park
Oxford OX 4 4GA
United Kingdom
T. +44 (0) 1865 784 829
F. +44 (0) 1865 784 004

SOUTH AMERICA

SOUTH AMERICA ESI Group South America Ltda.

Rua Artur de Azevedo,
1857 cj. 45
São Paulo - SP 05404-015
Brazil
T./F. +55 11 3062-3698

NORTH AMERICA

USA ESI North America

32605 W 12 Mile Road
Suite 350
Farmington Hills, MI
48334-3379
USA
T. +1 (248) 381-8040
F. +1 (248) 381-8998

USA ESI North America

6767 Old Madison Pike
Suite 600
Huntsville, AL 35806
USA
T. +1 (256) 713-4700
F. +1 (256) 713-4799

ASIA

CHINA ESI-ATE Holdings Limited

Room 16A,
Base F Fu Hua Mansion
No. 8 Chaoyangmen
North Avenue
Beijing 100027
China
T. +86 (0) 6554 4907
F. +86 (0) 6554 4911

CHINA ZHONG GUO ESI CO., LTD

Unit 401-404, bldg G,
Guangzhou Soft-Park No.
11, Caipin Road, Guangzhou
Science City (G5C)
Guangzhou 510663
China
T. +86 (020) 3206 8272
F. +86 (020) 3206 8107

INDIA ESI India

Indrakrupa #17, 100 feet
ring road
3rd phase, 6th block,
Banashankari 3rd stage
Bangalore 560 085
India
T. +91 98809 26926
F. +91 80401 74705

JAPAN Nihon ESI K.K.

Headquarters and Sales
Division
5F and 16F Shinjuku Green
Tower Bldg. 6-14-1,
Nishi-Shinjuku
Shinjuku-ku, Tokyo 160-0023
Japan
T. +81 3 6381 8490
F. +81 3 6381 8488

KOREA Hankook ESI

157-033, 5F MISUNG
bldg., 660-6,
Deungchon-3Dong,
Gangseo-ku,
Seoul
South Korea
T. +82 2 3660 4500
F. +82 2 3662 0084

SOUTH-EAST ASIA ESI Group South-East-Asia Office

12A-2, Persiaran Puteri 1
Bandar Puteri Puchong
47000 Puchong, Selangor
Malaysia
T. +603-80607993
F. +603-80607661