



PAM-DIEMAKER FOR CATIA V5

A DEDICATED SOLUTION FOR RAPID STAMPING TOOL DESIGN WITHIN CATIA V5

KEY BENEFITS

· Quality & Speed

PAM-DIEMAKER for CATIA V5 provides the convenience and efficiency of rapid die face design, with the quality of the native CAD surfacing, offering trade-oriented functionality directly inside CATIA.

· Consistent Data Management

Die designs stored as CATPart models, can be retained, modified, and shared as required.

By remaining 'inside' CATIA there is no data transfer or neutral file to risk regression of quality.

· Engineering update

Fully integrated in CATIA, DIEMAKER takes advantage of the geometry update of CATIA, modifying the Die design as a result of changes in the Component design.

· Connection to simulation for Early Process Feasibility

Native format connection to PAM-STAMP 2G allows fast and efficient simulation iterations.

The rapid die design allows the assessment of different die design concepts (single/double attached, full/partial draw etc.), which can be quickly evaluated with simulation, to assure design feasibility.



Breakthrough solution allowing die designers to create the first draft of a die addendum within minutes directly in their CAD environment.

PAM-DIEMAKER for CATIA V5 offers powerful interactive tools and functions which provide guidance and support for part preparation, binder development and die addendum design.

PRODUCTIVE AND STREAMLINED ENVIRONMENT

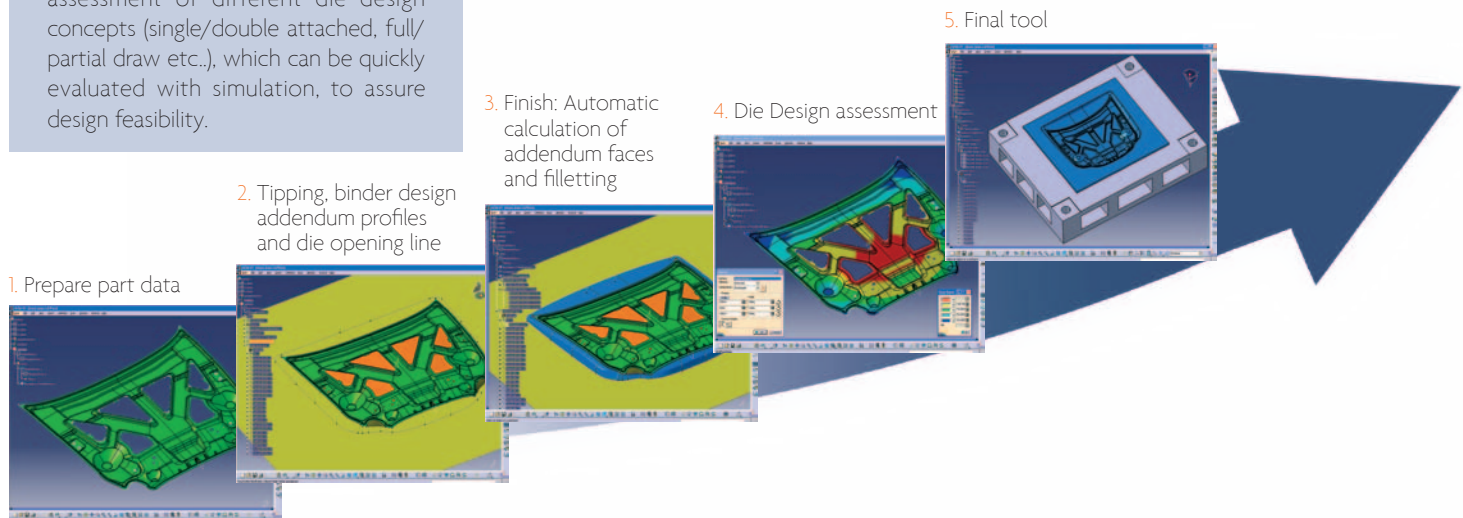
PAM-DIEMAKER for CATIA V5 optimizes the die designer's workload by implementing design & process knowledge directly into the CATIA PLM context.

The integration in CATIA V5 PLM environment provides a number of benefits:

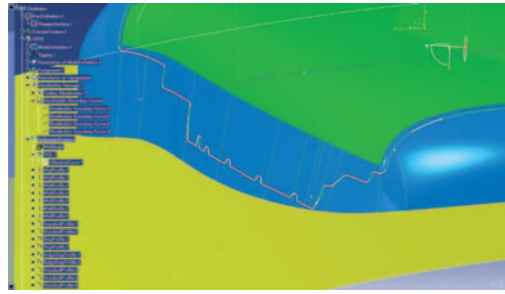
- Instant productivity with minimal learning curve within a familiar user environment.
- The seamless integration combines the wide range of CATIA functionalities with PAM-DIEMAKER's powerful tools, broadening the scope and bringing flexibility in the approach.
- Full CAD/simulation interoperability featuring native translator for rapid formability assessment with PAM-STAMP 2G protects data integrity.

CONNECTION TO SIMULATION

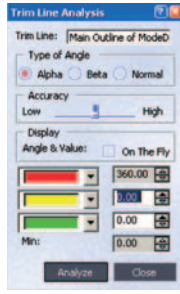
PAM-DIEMAKER for CATIA V5 provides a native format connection to PAM-STAMP 2G for easy data transfer to the simulation environment. The system provides efficient data transfer, passing all useful & relevant information, not only geometry, but also object descriptions, material information, and any process information defined in the PLM model, and the simple model updating functionality of PAM-STAMP 2G allows modeling of iterations with minimal effort.



OPEN THE WAY TO SIMULATION BASED DIE DESIGN FOR VIRTUAL PRODUCT DEVELOPMENT

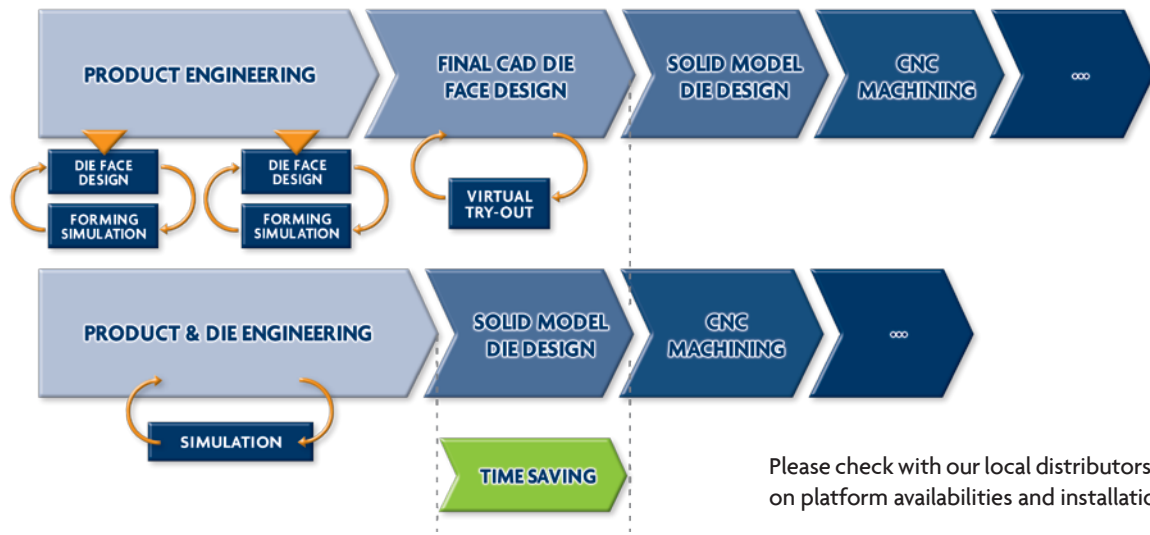


Trimline analysis function



TECHNICAL SPECIFICATIONS

- Maintains CATIA V5 native functionalities (sketcher, features,...).
- Provides dedicated press tool design functions for blankholders, addendum, gainers, u-ends, and analysis tools, for draw depth, undercut, trimming angles.
- Blends in CATIA V5's specific update mechanism.
- Preserves full compatibility with other CATIA V5 workbenches (Part design, CNC machining...).
- Achieves surface quality consistent with CATIA V5 surfaces. Typically: high quality surface.
- Delivers surfaces suitable for final die design & downstream processes (Solid design, CNC machining...).
- Links to simulation environment using native transfer 'bridge'



Please check with our local distributors for information on platform availabilities and installation prerequisites.

For more information, visit: <http://www.esi-group.com/products/metal-forming/catia-v5/benefits>

ABOUT ESI GROUP

ESI is a world-leading supplier and pioneer of digital simulation software for prototyping and manufacturing processes that take into account the physics of materials. ESI has developed an extensive suite of coherent, industry-oriented applications to realistically simulate a product's behavior during testing, to fine-tune manufacturing processes in accordance with desired product performance, and to evaluate the environment's impact on product performance. ESI's products represent a unique collaborative and open environment for Simulation-Based Design, enabling virtual prototypes to be improved in a continuous and collaborative manner while eliminating the need for physical prototypes during product development. The company employs over 750 high-level specialists worldwide covering more than 30 countries. ESI Group is listed in compartment C of NYSE Euronext Paris. For further information, visit www.esi-group.com.



www.esi-group.com
info@esigroup.com

ESI Group Headquarters
ESI Group
100-102 Avenue de Suffren
75015 Paris
FRANCE
T. +33 (0)1 53 65 14 14
F. +33 (0)1 53 65 14 12

EUROPE

CZECH REPUBLIC & EASTERN EUROPEAN COUNTRIES
MECAS ESI s.r.o.
Brojova 2113/16
326 00 Plizen
Czech Republic
T. +420 377 432 931
F. +420 377 432 930

FRANCE ESI France
Parc d'Affaires Silic
99, rue des Solets - BP
80112
94513 Rungis cedex
France
T. +33 (0)1 49 78 28 00
F. +33 (0)1 46 87 72 02

GERMANY ESI GmbH
Sales & Technical
Headquarters
Mergenthalerallee 15-21
D-65760 Eschborn
Germany
T. +49(0)6196 9583-0
Fax: +49(0)6196 9583-111

ITALY ESI Italia srl
Via San Donato 191
40127 Bologna
Italy
T. +39 0516335577
F. +39 0516335578
T. +39 0516335601

SPAIN ESI GROUP HISPANIA, S.L.
Parque Empresarial Arroyo de la Vega
C/ Francisca Delgado,
11 - planta 2º
28108 Alcobendas (Madrid)
Spain
T. +34 91 484 02 56
F. +34 91 484 02 55

SWITZERLAND Calcom ESI SA
Parc Scientifique
EPFL / PSE-A
1015 Lausanne-EPFL
Switzerland
T. +41 21 693 2918
F. +41 21 693 4740

UNITED KINGDOM ESI-UK Ltd.
The Magdalen Centre
Oxford Science Park
Oxford OX 4 4GA
United Kingdom
T. +44 (0) 1865 784 829
F. +44 (0) 1865 784 004

SOUTH AFRICA

BRAZIL ESI Group South America Technical Support Office
Rua Artur de Azevedo,
1857 cj. 45
São Paulo - SP 05404-015
Brazil
T./F. +55 11 3062-3698

NORTH AMERICA

USA ESI North America Commercial Headquarters
36800 Woodward
Suite 200
Bloomfield Hills, MI 48304
USA
T. +1 (248) 203 0642
F. +1 (248) 203 0696

USA ESI US R&D
6767 Old Madison Pike
Suite 600
Huntsville, AL 35806
USA
T. +1 (256) 713-4700
F. +1 (256) 713-4799

ASIA

CHINA ESI-ATE Holdings Limited
Room 16A,
Base F Fu Hua Mansion
No. 8 Chaoyangmen
North Avenue
Beijing 100027
China
T. +86 (0) 6554 4907
F. +86 (0) 6554 4911

CHINA ZHONG GUO ESI CO., LTD
Unit 401-404, bldg G,
Guangzhou Soft-Park No.
11, Caipin Road, Guangzhou
Science City (G5C)
Guangzhou 510663
China
T. +86 (020) 3206 8272
F. +86 (020) 3206 8107

INDIA ESI India
Indrakrupa #17, 100 feet
ring road
3rd phase, 6th block,
Banashankari 3rd stage
Bangalore 560 085
India
T. +91 80401 74705
F. +91 80401 74705

JAPAN Nihon ESI K.K. Headquarters and Sales Division
5F and 16F Shinjuku Green
Tower Bldg, 6-14-1,
Nishi-Shinjuku
Shinjuku-ku, Tokyo 160-0023
Japan
T. +81 3 6381 8490
F. +81 3 6381 8488

KOREA Hankook ESI
157-033, 5F MISUNG
bldg., 660-6,
Deungchon-3Dong,
Gangseo-ku,
Seoul
South Korea
T. +82 2 3660 4500
F. +82 2 3662 0084

SOUTH-EAST ASIA ESI Group South-East-Asia Office
12A-2, Persiaran Puteri 1
Bandar Puteri Puchong,
Selangor
Malaysia
T. +603-80607993
F. +603-80607661